

## Candor Combination board

### User manual

#### General information

The Candor Combination board is a medical device used for precise positioning and immobilization of patients undergoing radiation therapy treatments of the head, neck, and breast area.

#### Product description

The Combination board is a lightweight multi-treatment board manufactured in either a high-quality carbon fiber or MR safe material. The board is made from principles of simplicity and easy handling of the set-up of each individual patient.

#### Storage and cleaning

Store in a clean, dry place away from direct sunlight. Wipe thoroughly with a neutral antiseptic cleaner. Allow to dry thoroughly before next use.

#### Product specifications

Subject	Value
Dimensions (B x L x H)	1254 x 488 x 20mm
Weight	XRT-1500: 3,8kg
Lifetime for the Board, based on the assumption that, service and maintenance has been carried out according to this manual.	20 years
Working temperature	$+5 < T_{amp} < +30 \text{ }^{\circ}\text{C}$
Environment	Only dry indoor conditions
Lightning over the board	Min. 200 Lux
Use in explosive environment (ATEX)	May not be used in ATEX areas
Use in food industry	May not be used in the food industry

#### Instructions for use:

##### Baseplate

Place the Combination board on the tabletop by placing the L-profiles on the edge of the tabletop and index units in the index holes on the tabletop.

##### Leveling the board

The Combination board as standard lays flat on the treatment tabletop but can easily be tilted at four different angles.

Level 1 = 4 degrees

Level 2 = 7 degrees

Level 3 = 10 degrees

Level 4 = 13 degrees

To adjust the level of the head and neck of the patient using the included angles, lift the head end of the board with one hand while placing the required angle wedge with the other hand.

The correct position of the wedges is defined by the two knobs on the wedge. These two knobs fit perfectly into two corresponding holes. The mark on the locks of the wedge will fit the two marks on the Combination board.



## Setting up the Combination board:

The Candor Combination board, is a board with integrated patient immobilization facilities for the following treatments:

- Cranium
- Head
- Neck
- Breast
- Lung

Place the Breast board on the tabletop so that it's indexed on the tabletop.

## Accessories for the Combination board

SKU	Product
XRT-1809	Anglesupport
XRT-1221	Hand grips
XRT-1220	Armrest
XRT-1225	Padded armbridge
XRT-1854	Buttstop

### Handgrips

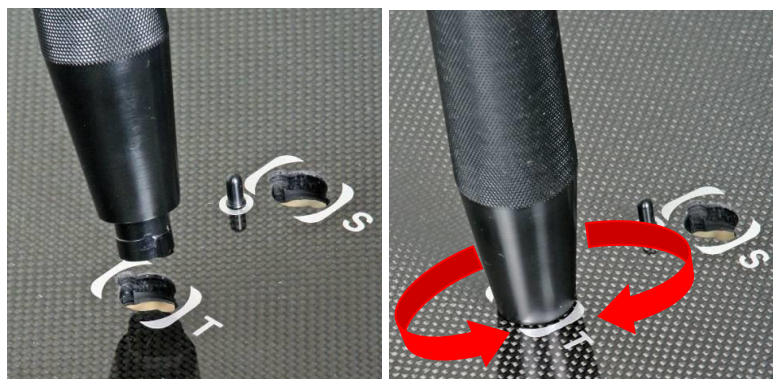
The handgrips can be placed on the board in the positions marked on the board named R, S, T and U.

#### To place the handgrips:

Insert each handgrip in the required hole and make a half turn clockwise.

#### To remove or replace the handgrips:

Turn the handgrip half a turn counterclockwise and pull the handgrip upwards.



### Armrest

The Armrest can be set at 4 positions on each side of the board, they are named A, B, C and D.

The Armrest can also be tilted in 4 different angles named S1, S2, S3 and S4.

#### To place the armrest:

Place finger screw in the required hole and make a quarter to half a turn clockwise to lock the finger screw.

#### To remove or replace the Armrest:

Turn the finger screw counterclockwise lift the finger screw to remove the Armrest.



## To change position of the Armrest:

Untighten the finger screw and turn armrest to desired position.

## To change the tilt of the Armrest:

Lift the plate with the arm cup and tilt the small plate forward or backwards to place the plate with the arm cup in a correct and safe position S1, S2, S3 or S4.



## **Armbridge**

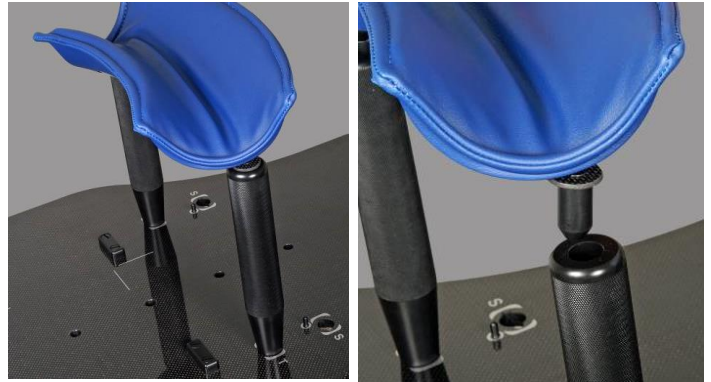
### To place the armbridge:

Place two handgrips with identical lengths in position T or S on the board.

Place the two knobs on the armbridge into the holes on top of the handgrips.

### To remove the armbridge:

Lift the armbridge upwards and remove it.



## **Buttstop**

The Buttstop can be placed 12 different places on the board to fit the individual patient.

### To place the Buttstop:

Place the pins on the Buttstop in the holes for the positions you want to use and slide it gently backwards into locked position.

### To remove the Buttstop:

Slide the Buttstop forwards and lift it up to remove it.

