

## Candor SBRT board

### User manual

#### General information

The Candor SBRT System is a medical device used for precise positioning and immobilization of patients undergoing radiation therapy treatments for tumors outside the CNS that require either a single high dose radiation treatment or a few fractionated radiation treatments.

#### Product description

The Candor SBRT board is designed to be simple to use, highly indexable, and easily adjustable. The standard system has a streamlined design to allow for quick and easy set up with accurate reproducibility. Advanced indexing options are included in the standard system for treatments requiring high conformity and detail. Both standardized and customized indexing options are available in the form of Masks, Klarity Cushions™, and Vacuum Bags providing strong support, comfort, and accurate positioning.

#### Storage and cleaning

Store in a clean, dry place away from direct sunlight. Wipe thoroughly with a neutral antiseptic cleaner. Allow to dry thoroughly before next use.

#### Equipment

Included equipment	
XRT-1809	Anglesupport
XRT-1220	Armrest
XRT-1854	Buttstop
XRT-1500	Combination board
XRT-1221	Hand grips
XRT-1225	Padded armbridge
XRT-P1100-2018	PelvicFix

#### Instructions for use:

##### Baseplate

Place the Combination Board on the tabletop by placing the L-profiles on the edge of the tabletop and index units in the index holes on your tabletop.

##### Leveling the board

The SBRT Board as standard lays flat on the treatment tabletop but can easily be tilted at four different angles.

Level 1 = 4 degrees

Level 2 = 7 degrees

Level 3 = 10 degrees

Level 4 = 13 degrees

To adjust the level of the head and neck of the patient using the included angles, lift the head end of the board with one hand while placing the required angle wedge with the other hand.

The correct position of the wedge is defined by the two knobs on the wedge. These two knobs fit perfectly into two corresponding holes. The mark on the locks of the wedge will fit the two marks on the combination board.

## Hands & arms

### Handgrips

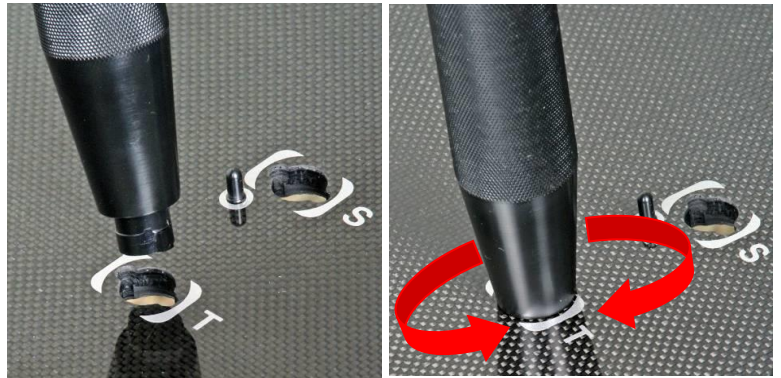
The included handgrips can be placed on the board in the positions marked on the board named R, S, T and U.

#### To place the handgrips:

Insert each handgrip in the required hole and make a half turn clockwise.

#### To remove or replace the handgrips:

Turn the handgrip half a turn counterclockwise and pull the handgrip upwards.



### Armrest

The Armrest can be set at 4 positions on each side of the board, they are named A, B, C and D.

The Armrest can also be tilted in 4 different angles named S1, S2, S3 and S4.

#### To place the armrest:

Place finger screw in the required hole and make a quarter to half a turn clockwise to lock the finger screw.

#### To remove or replace the Armrest:

Turn the finger screw counterclockwise lift the finger screw to remove the Armrest.



#### To change position of the Armrest:

Untighten the finger screw and turn armrest to desired position.

#### To change the tilt of the Armrest:

Lift the plate with the arm cup and tilt the small plate forward or backwards to place the plate with the arm cup in a correct and safe position S1, S2, S3 or S4.



## Armbridge

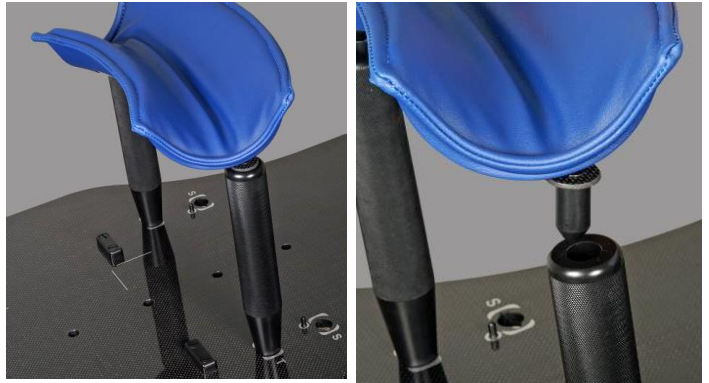
### To place the armbridge:

Place two handgrips with identical lengths in position T or S on the board.

Place the two knobs on the armbridge into the holes on top of the handgrips.

### To remove the armbridge:

Lift the armbridge upwards and remove it.



## Pelvic & feet

### Buttstop

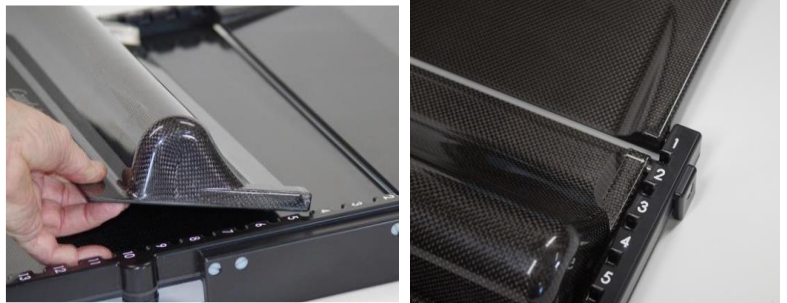
The Buttstop can be placed 12 different places on the board to fit the individual patient.

### To place the Buttstop:

Place the pins on the Buttstop in the holes for the positions you want to use and slide it gently backwards into locked position.

### To remove the Butt Stop:

Slide the Butt Stop forwards and lift it up to remove it.



### PelvicFix

Place the PelvicFix on the tabletop and tighten the handle on the index bar.

### To connect the PelvicFix to the board:

Connect the PelvicFix to the baseplate.

Insert the pin on the Knee fix to the angle adjustment unit.



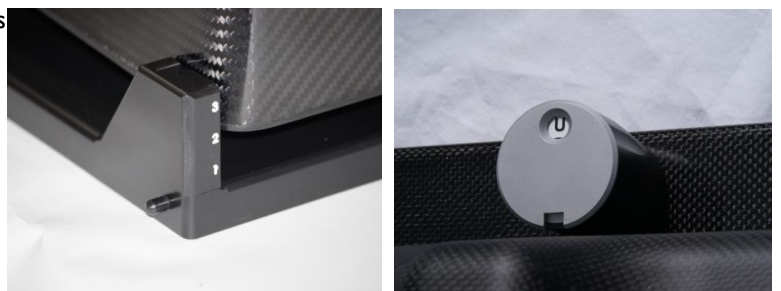
### Adjusting the height of the KneeFix:

The KneeFix can be levelled in the frontend in 4 angles (R, S, T and U), by turning the angle adjustment unit.

The KneeFix can be levelled in the backend in 3 heights (1, 2 or 3), by releasing the pin in the angle adjustment unit and then moving slightly forward to unlock the pins.

Move the KneeFix to the described height and secure it by moving the KneeFix backwards.

Insert the pin on the KneeFix to the angle adjustment.



## Adjusting the Feet Fix:

The distance between the KneeFix and the Feet Fix plate can be adjusted by pressing the locking handle inward (arrow direction).

The handle will tilt up with a click and be in an unlocked position.

Move the Feet Fix to the described distance and press down on the handle tip to release the locking handle.

Make sure that the locking handles is in the locked position by pressing it outwards, it may be necessary to move the Feet Fix slightly to lock it.

The Feet Fix can be levelled in 3 angles (0, 15 and 30 degrees). To change the angle, pull the handle, lift, or lower the Feet Fix to the desired angle, release the handle and make sure that it returns to the locked position.

